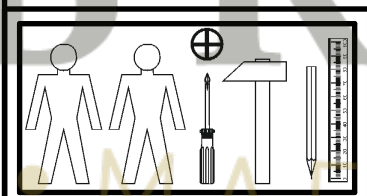
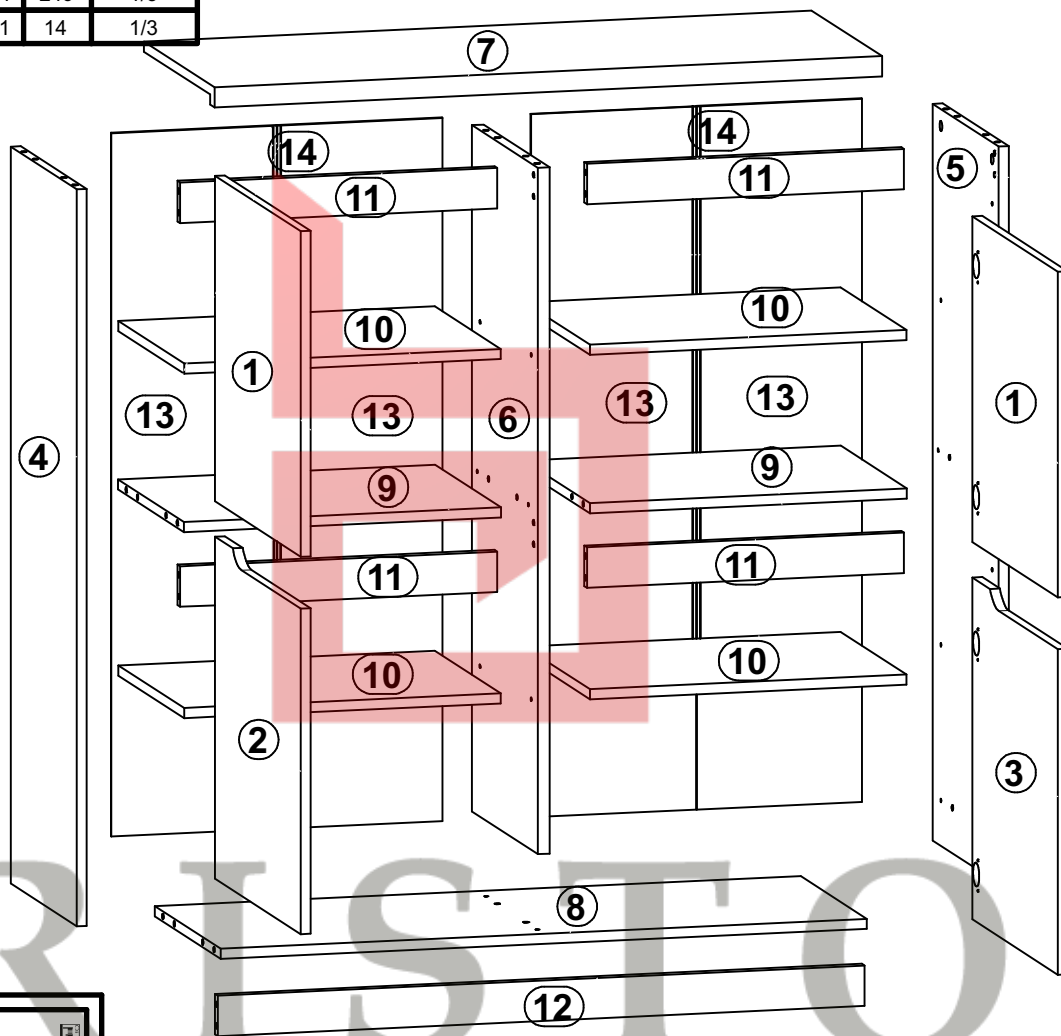
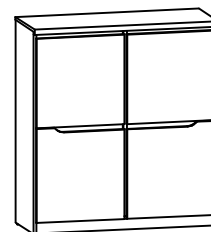
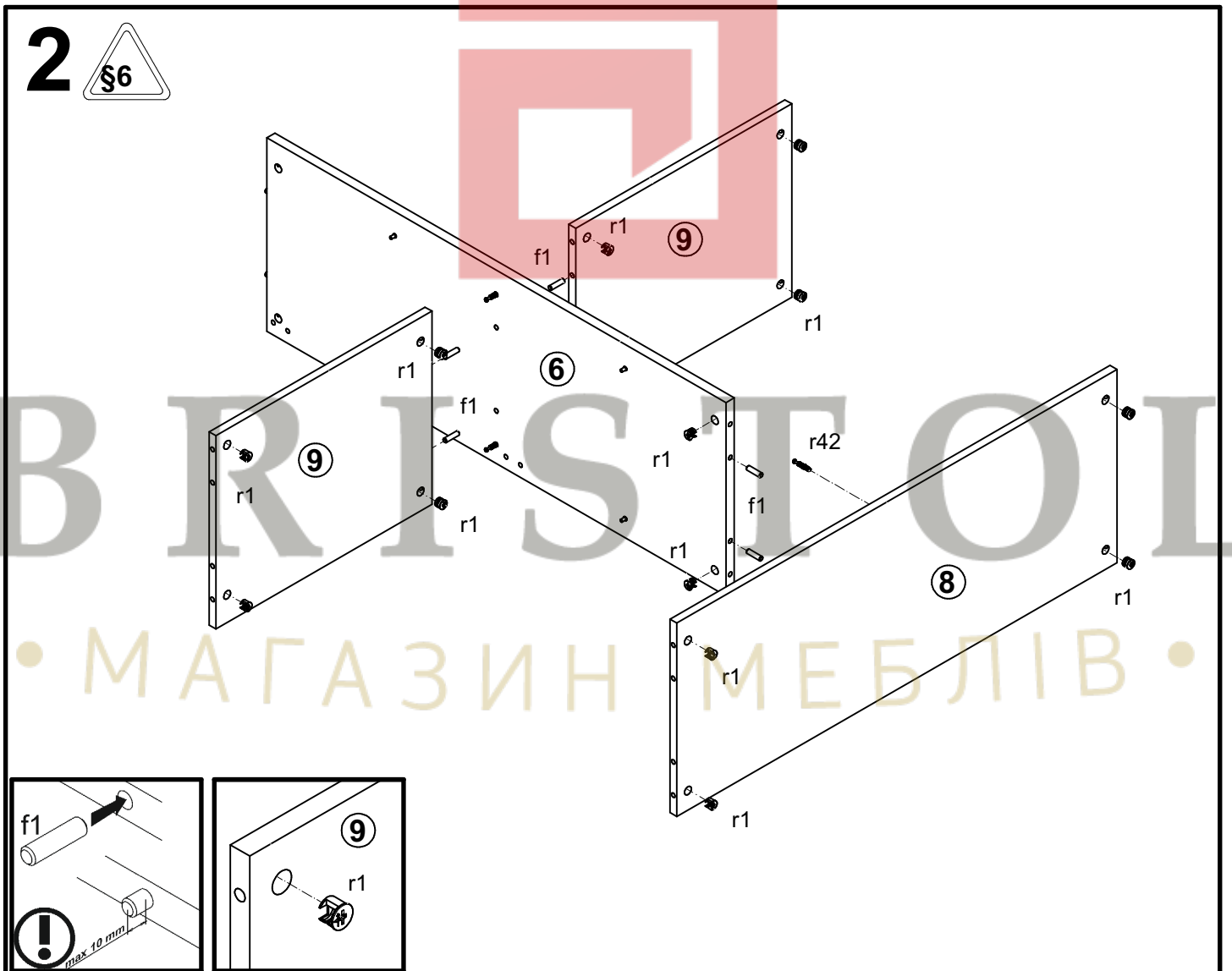
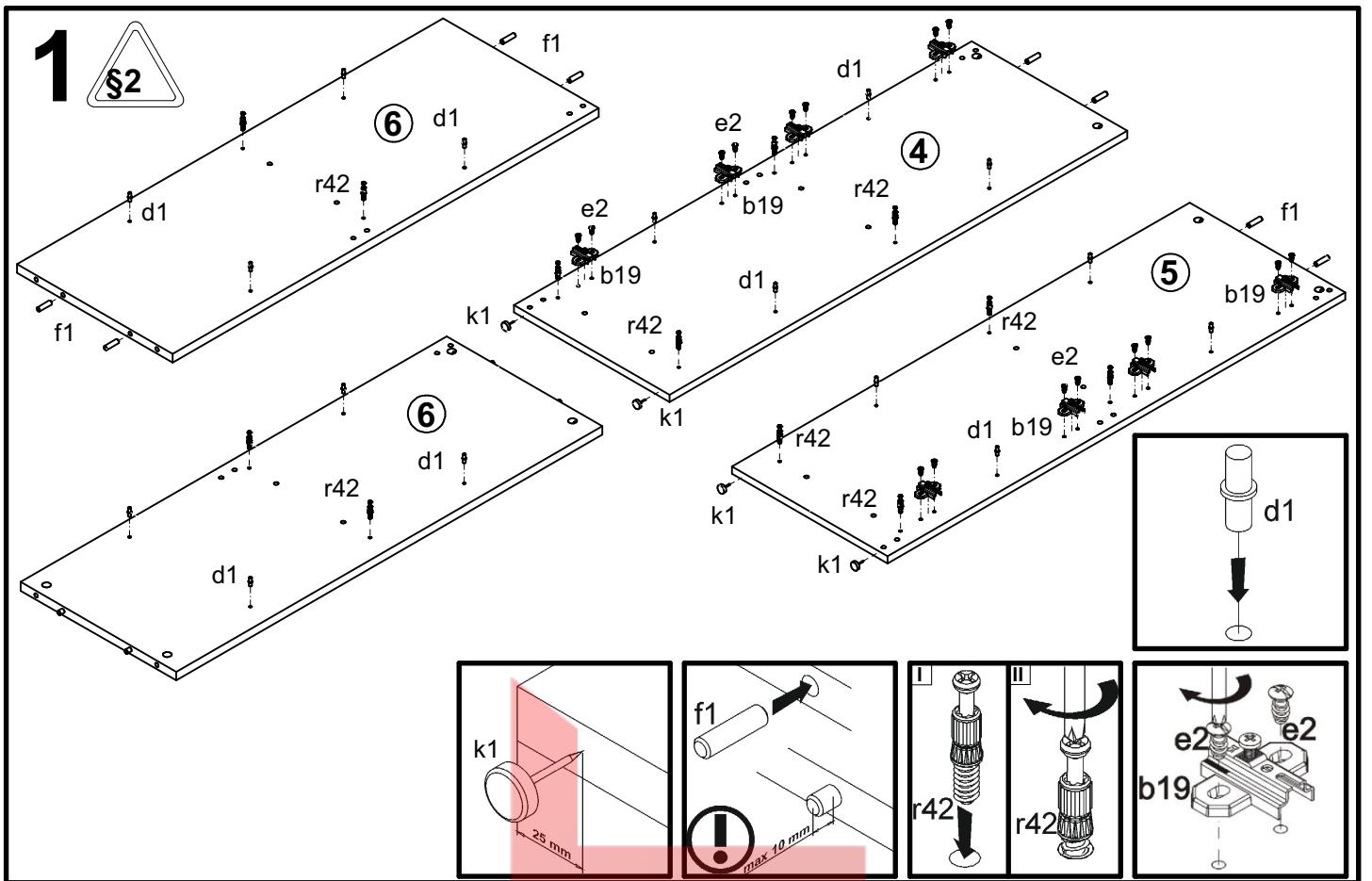


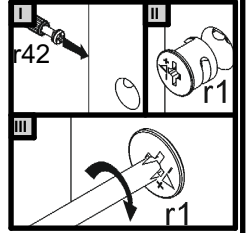
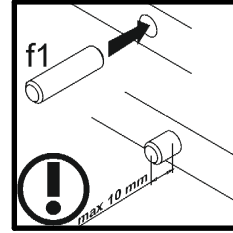
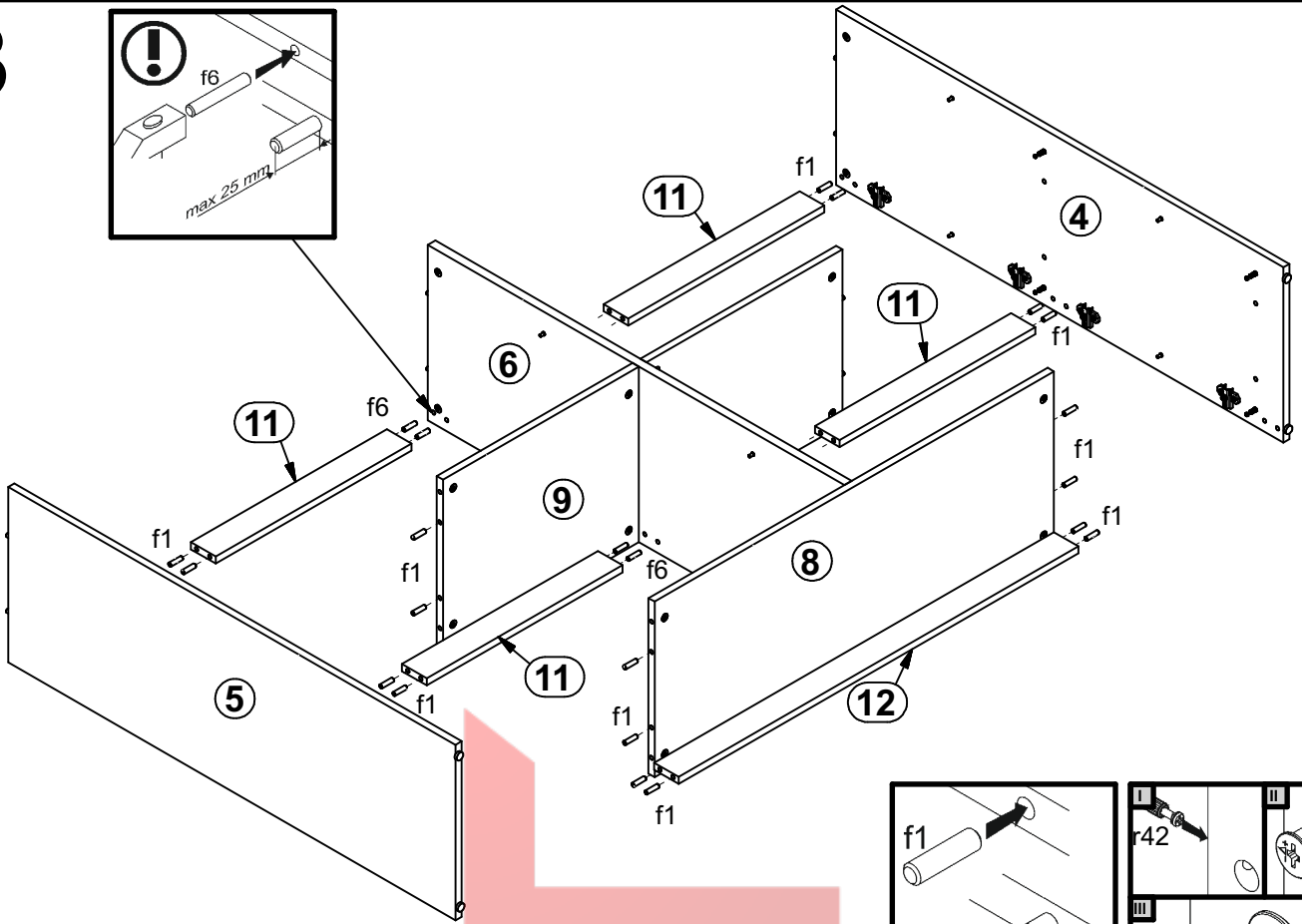
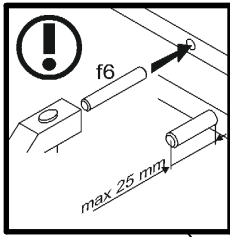
A	B	C		D
1	S162-0007	482	482	3/3
2	S162-0008	482	506	3/3
3	S162-0009	482	506	3/3
4	S162-1109	1091	371	1/3
5	S162-1110	1091	371	1/3
6	S162-1111	1016	371	1/3
7	S162-2204	1008	397	1/3
8	S162-3304	974	371	1/3
9	S162-3305	478	371	2/3
10	S162-3306	477	370	2/3
11	S162-4410	478	60	2/3
12	S162-4412	975	60	1/3
13	S162-9908	1041	249	1/3
14	Lh-1044	1011	14	1/3



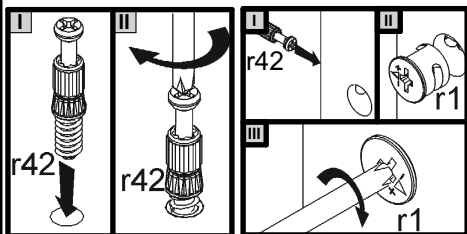
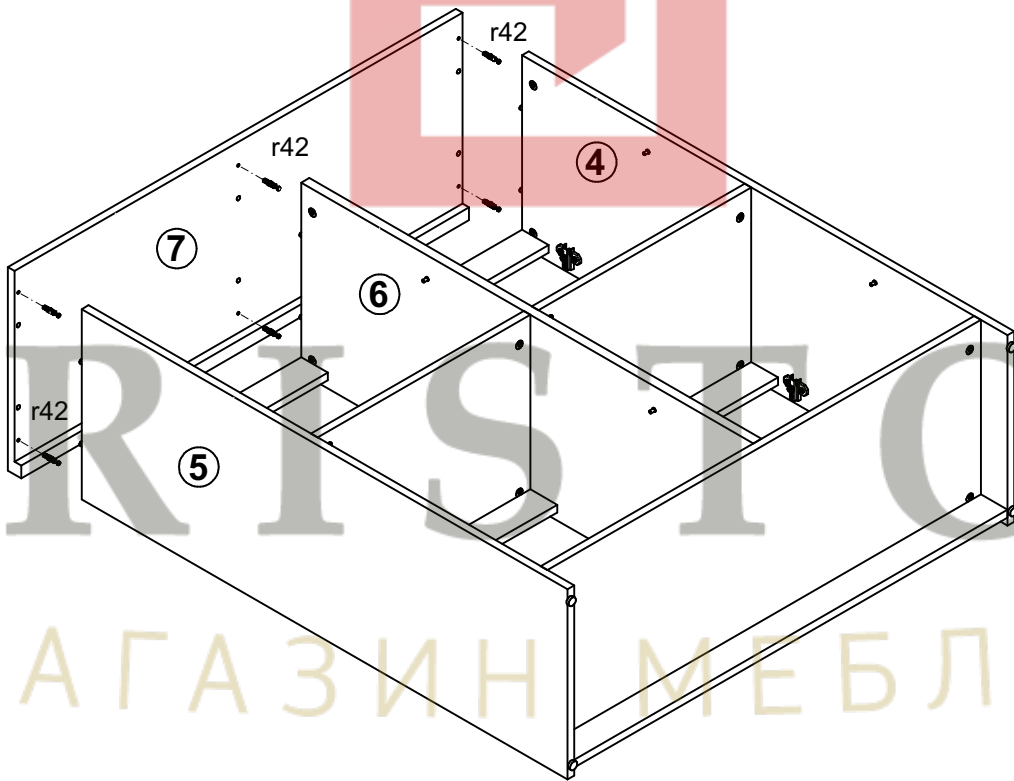
8x  a68	8x  b19	16x  d1 ø 5x17 mm	16x  e2 φ6,3x13 mm	32x  f1 φ8x30 mm	4x  k1	75x  l1	16x  p51 φ3,5x15 mm	20x  r1 φ1,5x12mm #16
20x  r42	1x  n26\1	1x  p38 φ3,5x16 mm	5x  s2 ø16	4x  f6 ∩8x50 mm				



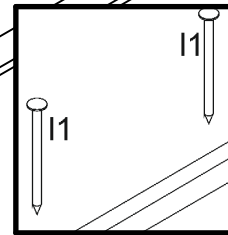
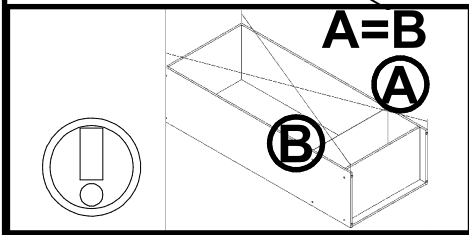
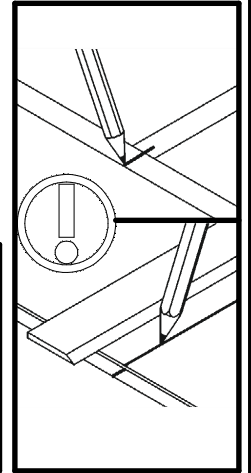
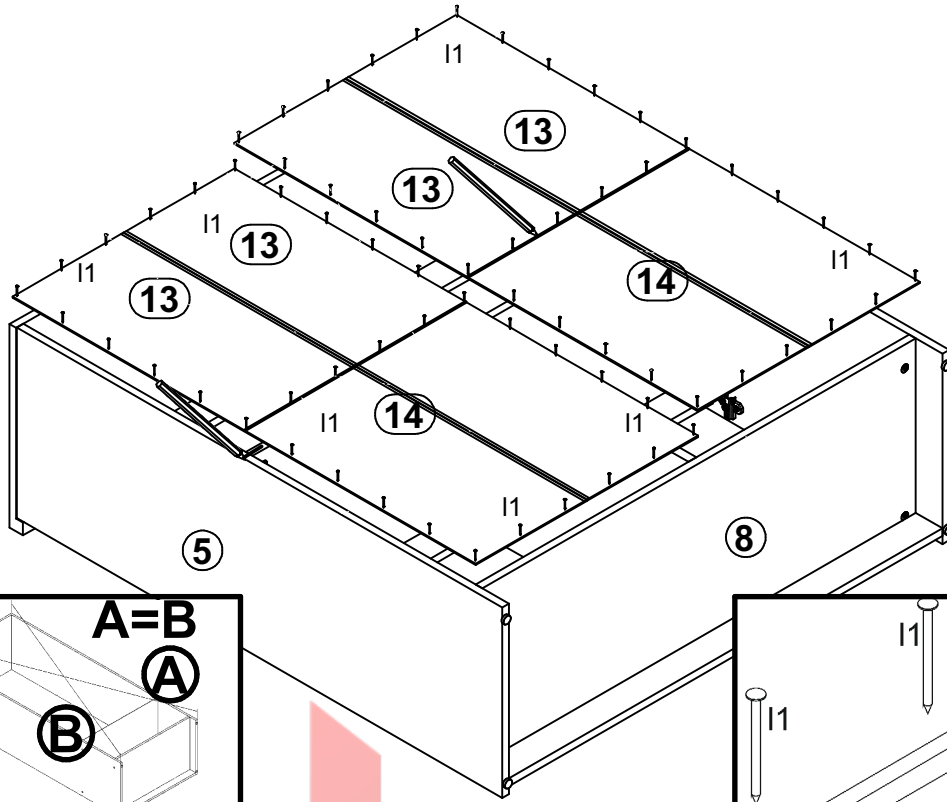
# 3



# 4



# 5



# 6

