

ОПЕН

Стелаж / Стеллаж _ **REG 50**
 Пенал відкритий / Пенал открытый _ **REG 1D 50**

A	B	C		D
1	S133-109	1995	332	1/2; 1/3
2	S133-110	1995	332	1/2; 1/3
3	S133-310	500	326	2/2; 2/3
4	S133-311	500	304	2/2; 2/3
5	S133-403	500	76	2/2; 2/3
6	S133-1910	1896	263	1/2; 1/3
7	LH-1869	1869	14	1/2; 1/3

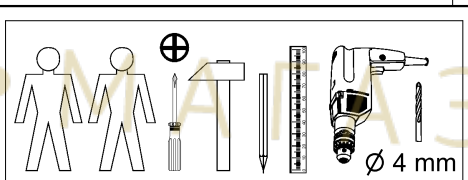
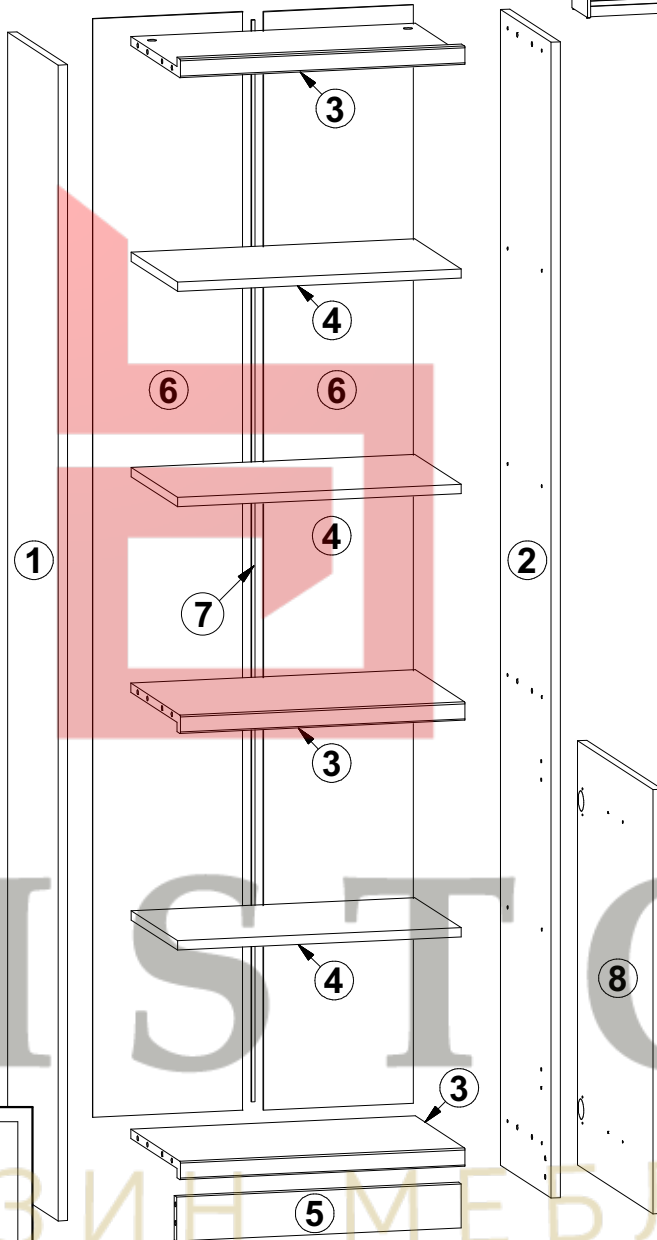


REG 50

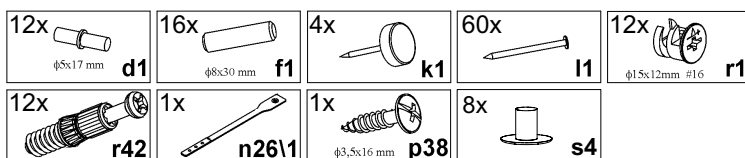
REG 1D 50

REG 1D 50

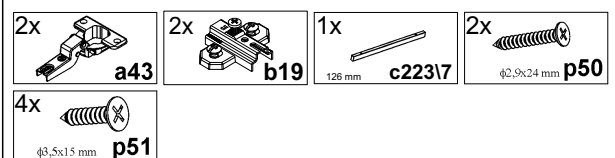
A	B	C	D	
8	S133-007	732	495	3/3



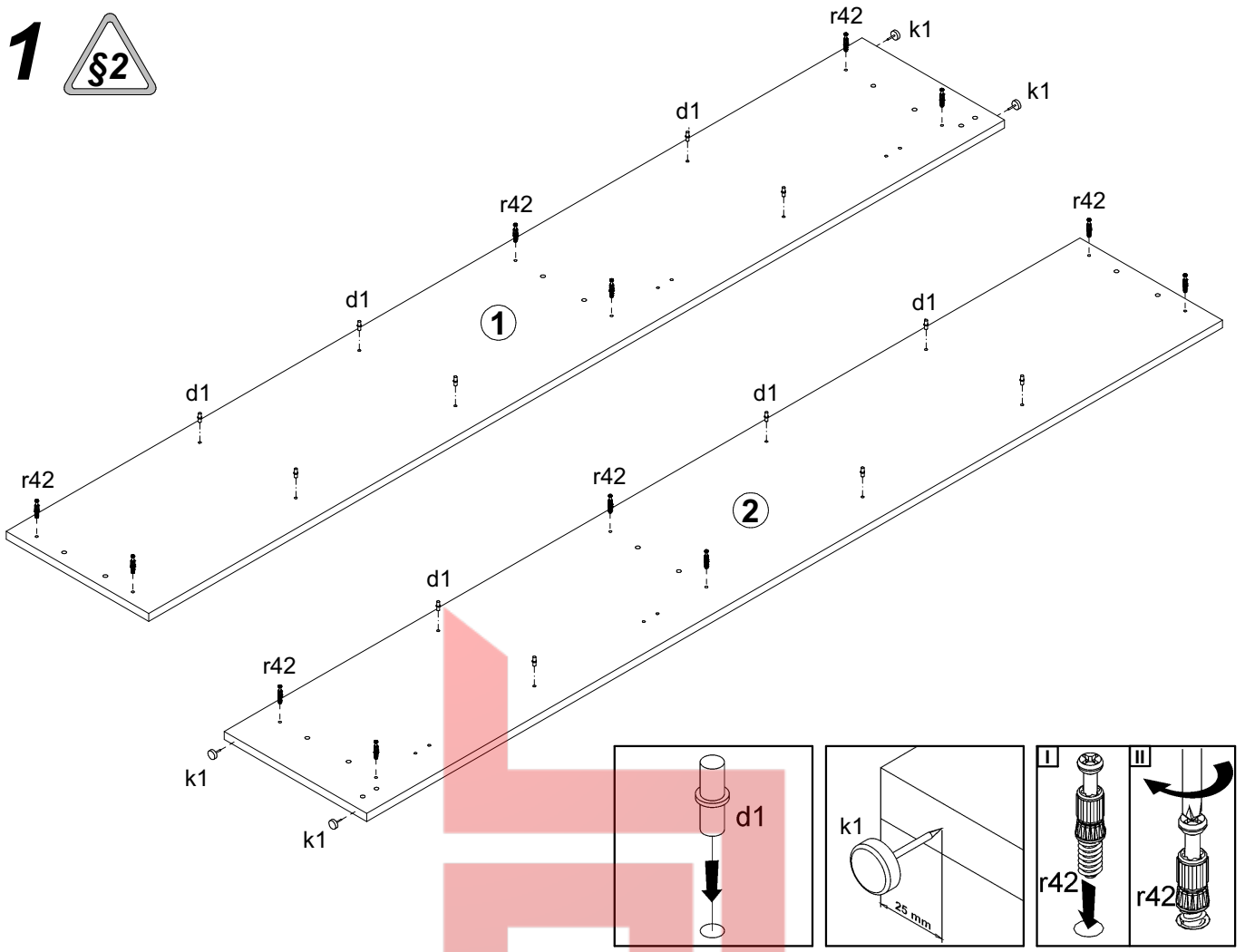
REG 50; REG 1D 50



REG 1D 50



1



2

