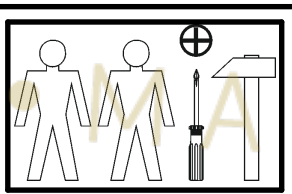
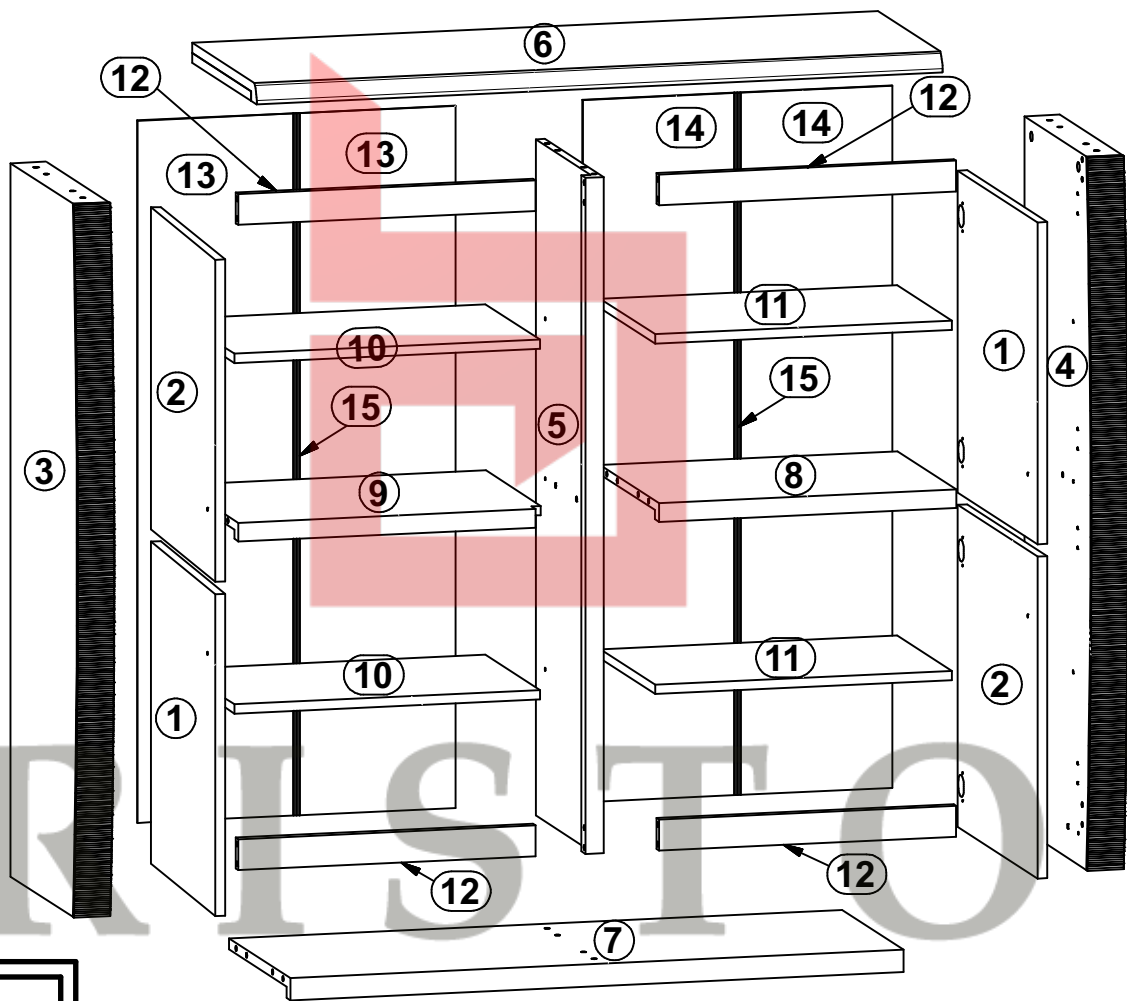
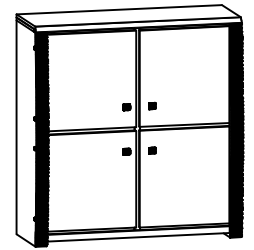


SENEGAL

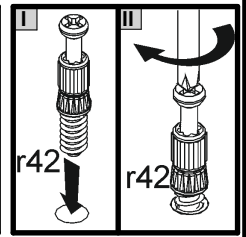
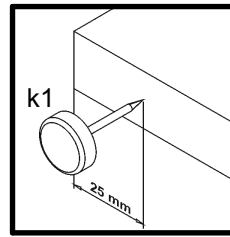
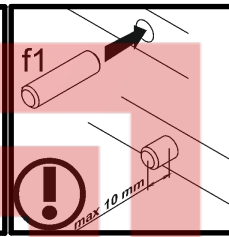
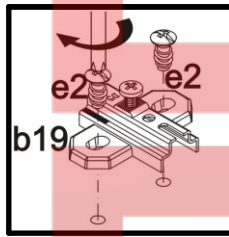
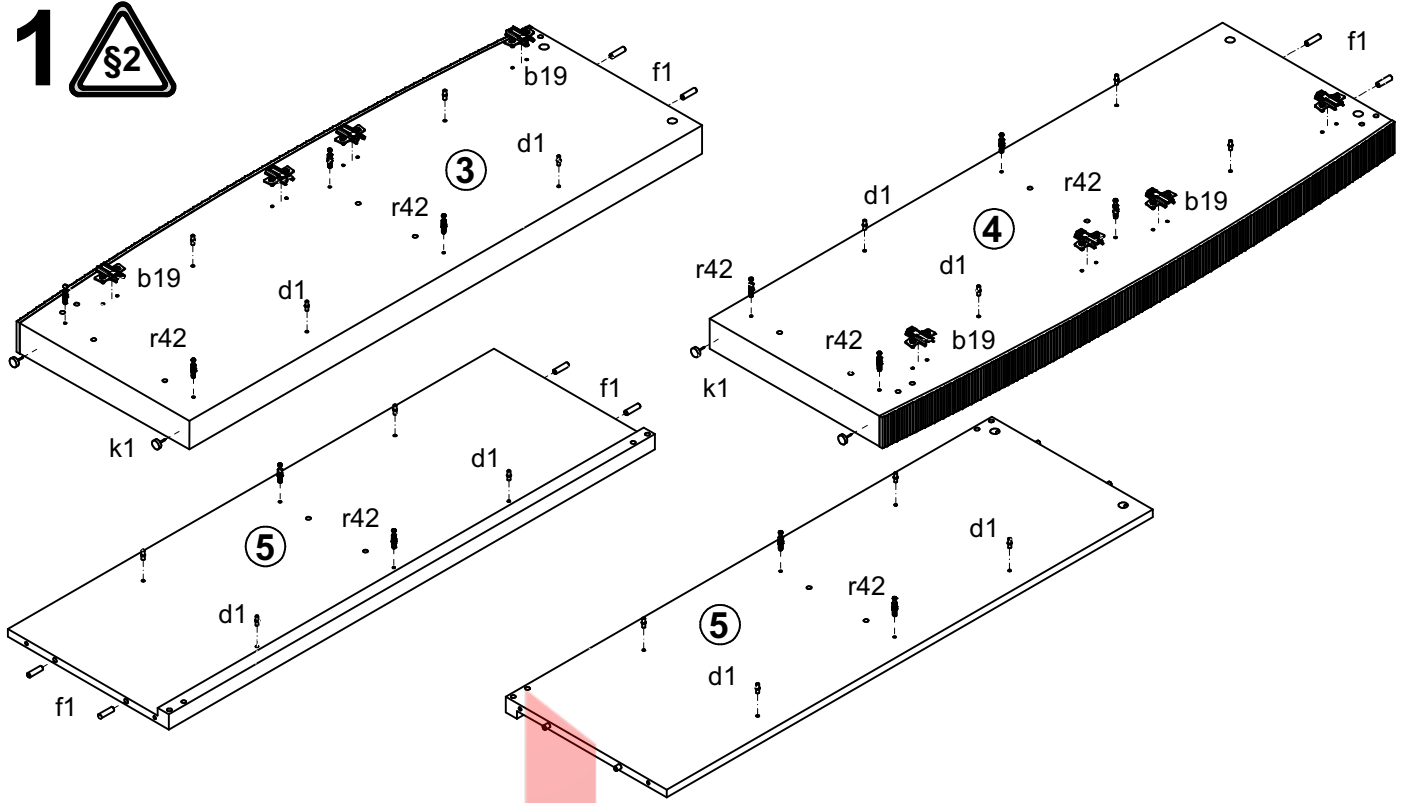
S175-KOM4D

A	B	C		D
1	S175-017	491	520	4/4
2	S175-018	491	520	4/4
3	S175-1109	1152	414	1/4
4	S175-1110	1152	414	1/4
5	S175-1111	1092	362	2/4
6	S175-2204	1129	394	2/4
7	S175-3306	1009	377	2/4
8	S175-3307	489	362	2/4
9	S175-3308	504	362	2/4
10	S175-3309	503	336	2/4
11	S175-3310	488	336	2/4
12	S175-4406	489	50	2/4
13	S175-9908	1134	283	1/4
14	S175-9909	1134	276	1/4 </td
15	Lh-1104	1104	14	1/4

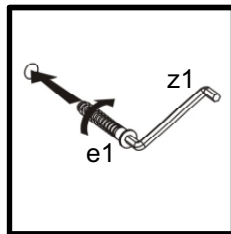
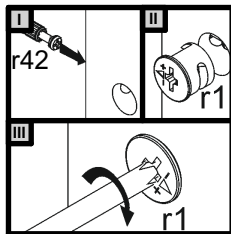
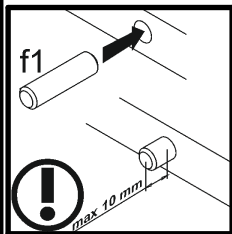
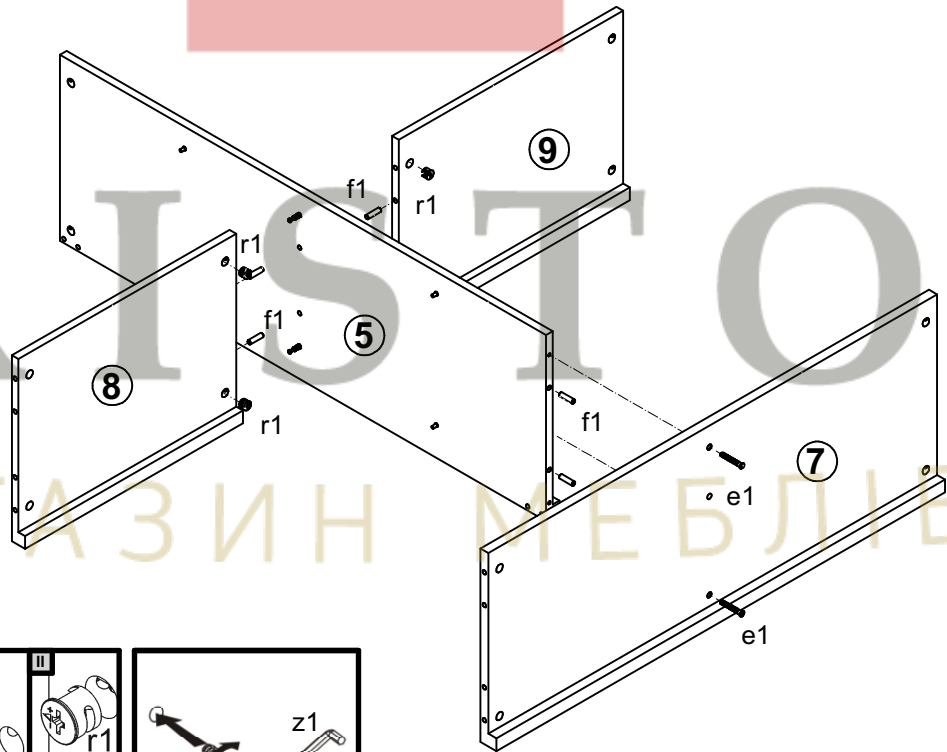


8x a43	8x b19	4x c295/1	4x c295/2	16x d1 5x17 mm	2x e1 17/7x50 mm	36x f1 φ8x30 mm	1x n26/1	1x p38 φ3,5x16 mm
4x j60 M4x22 mm	4x k1	80x l1	16x p51 ш8,5x15 mm	18x r1 φ15x12mm #16	18x r42	1x z1	4x s5/1 ш15	2x s2 ш16
16x e2 ш6,3x13 mm	1x k2/1	1x k2/2						

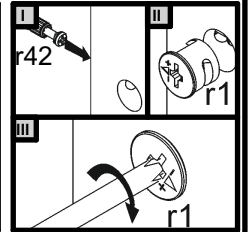
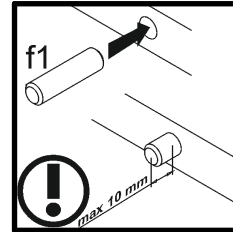
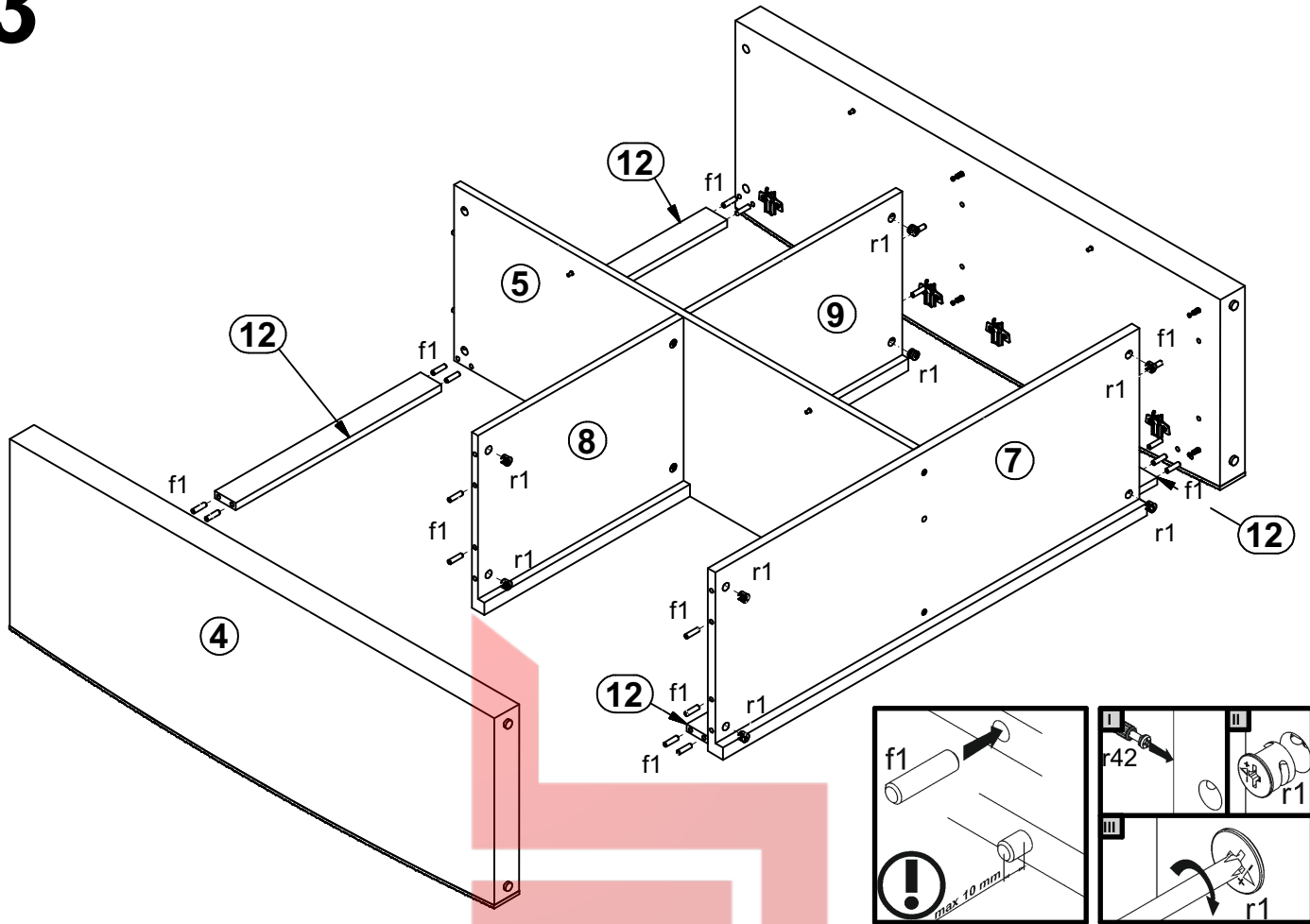
1

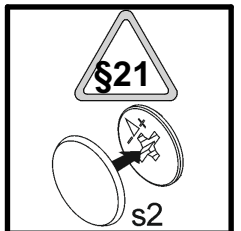
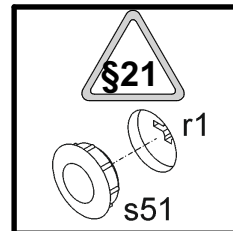
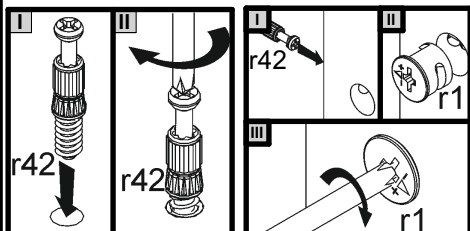
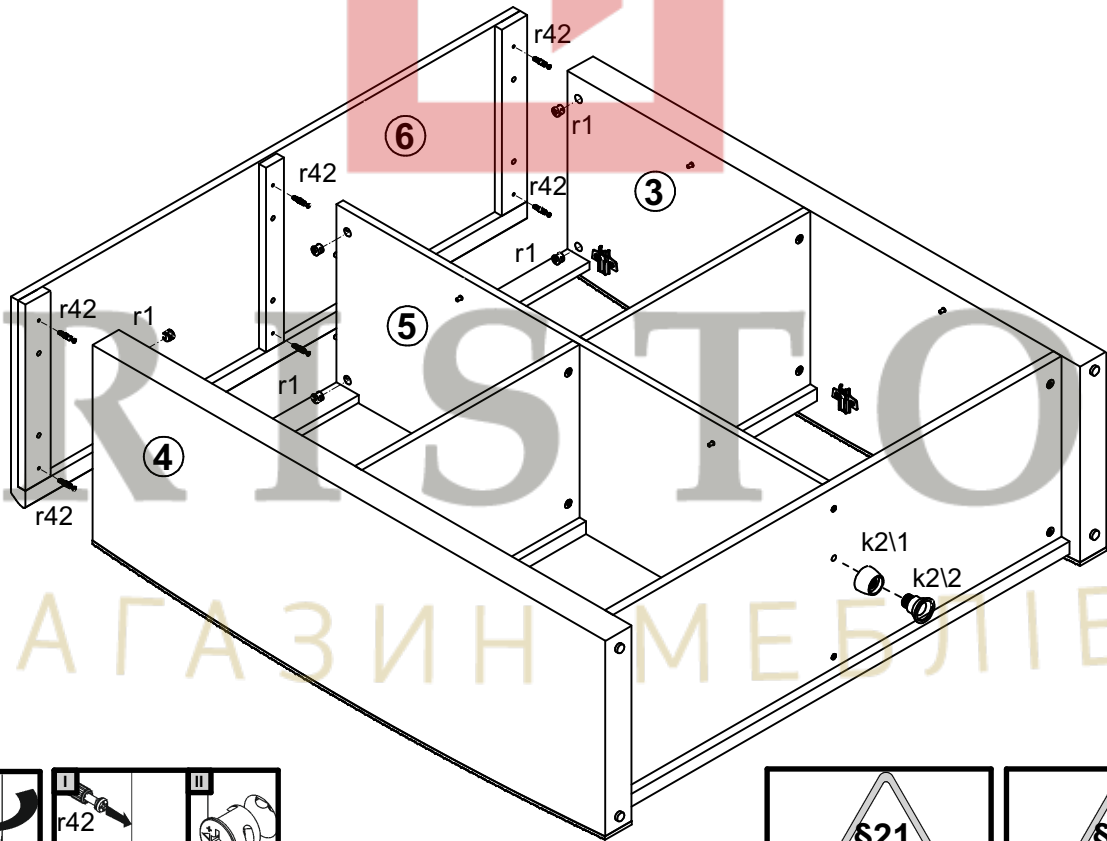
2

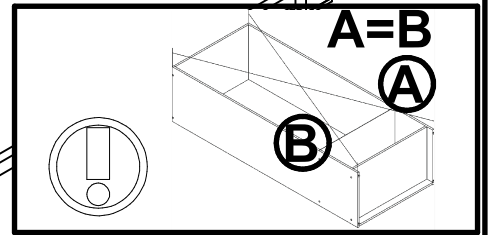
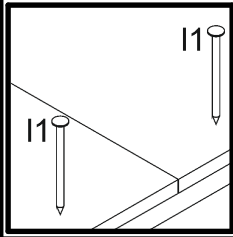
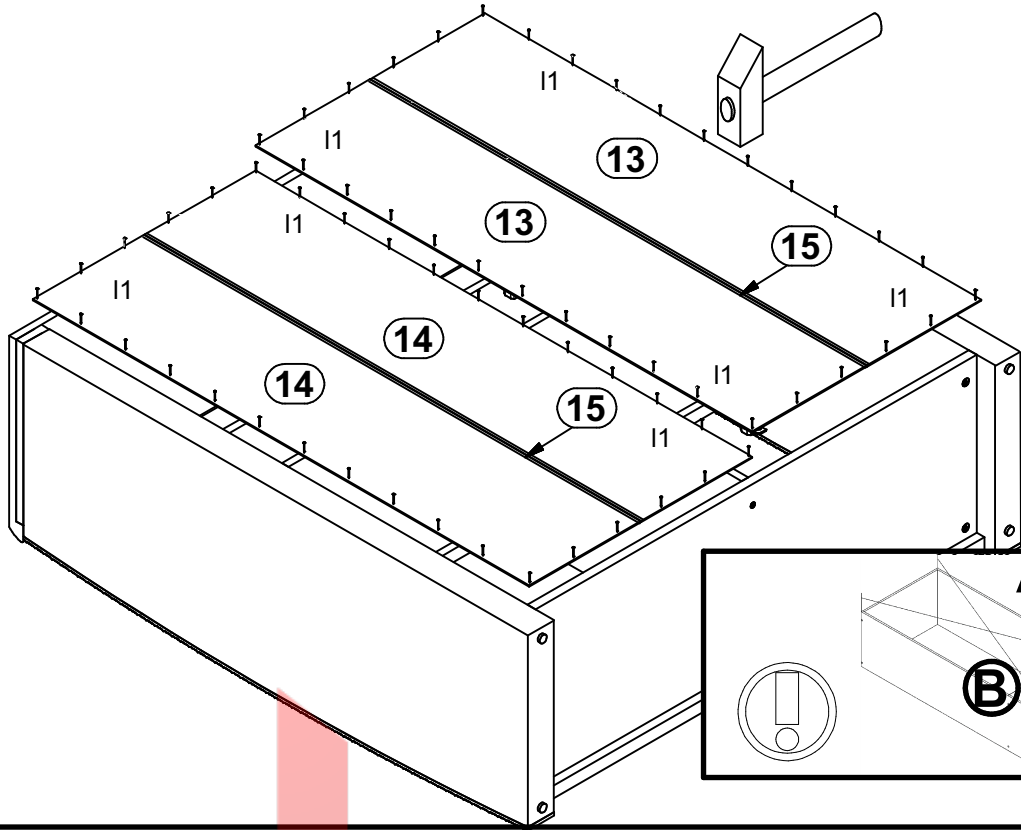
3



4



5



6

