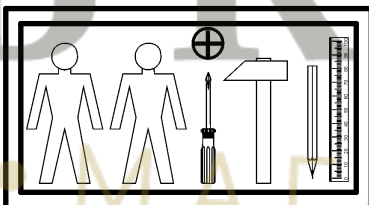
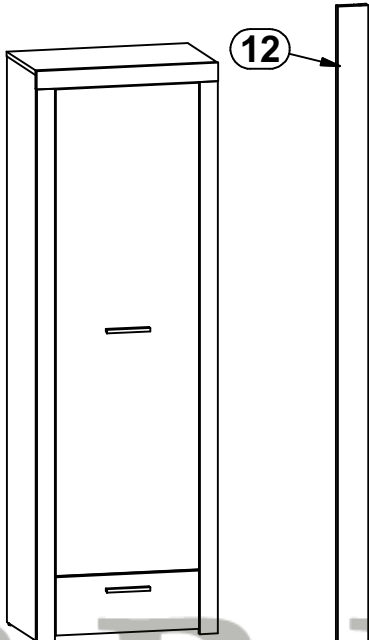
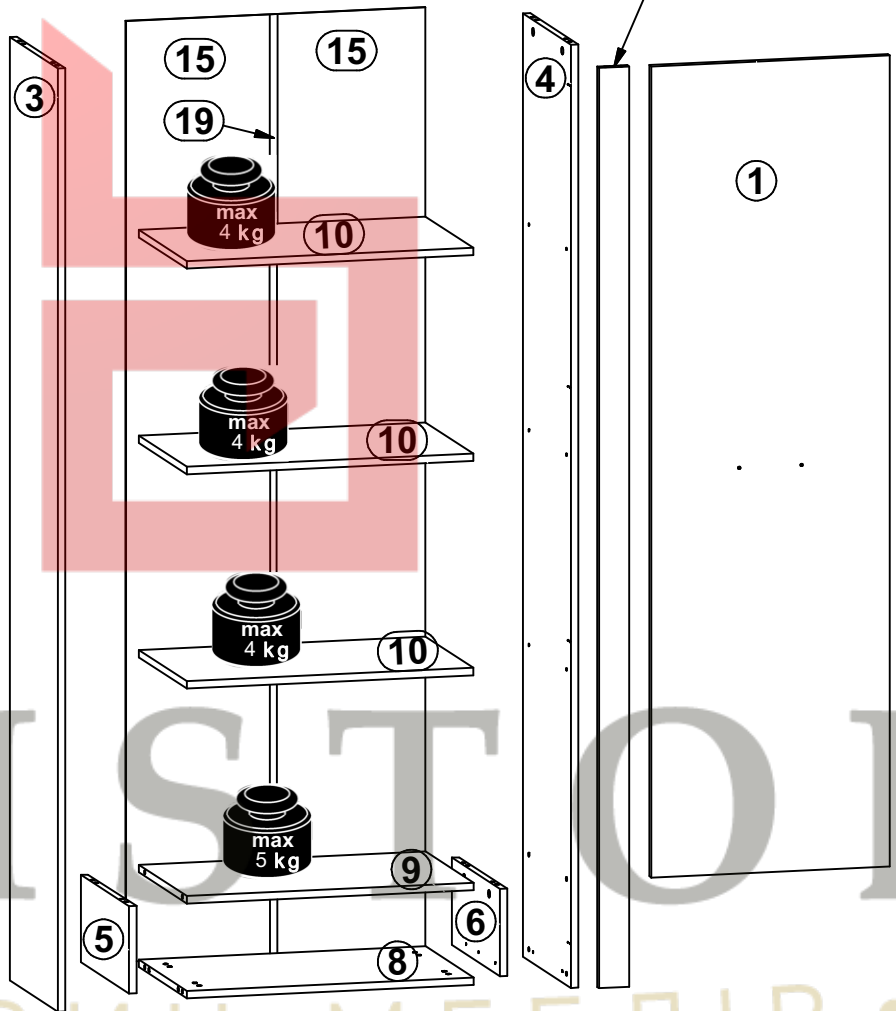
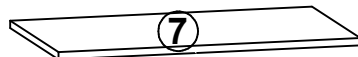
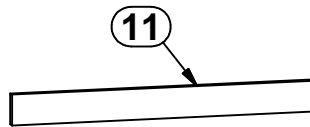
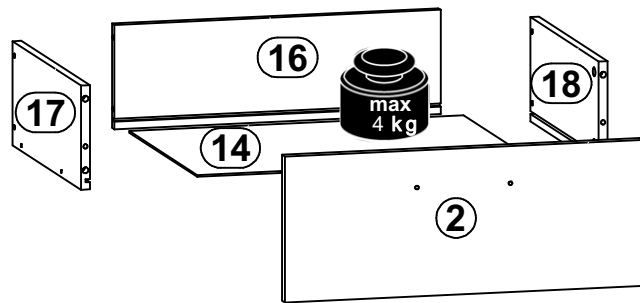
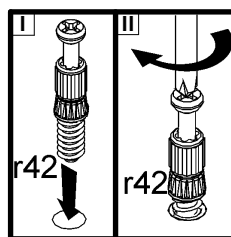
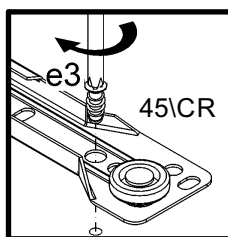
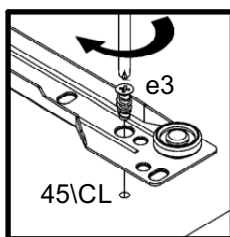
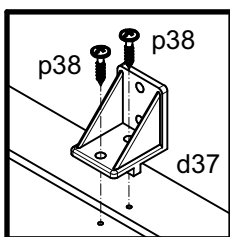
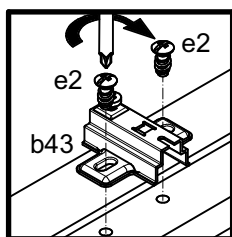
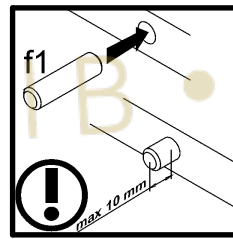
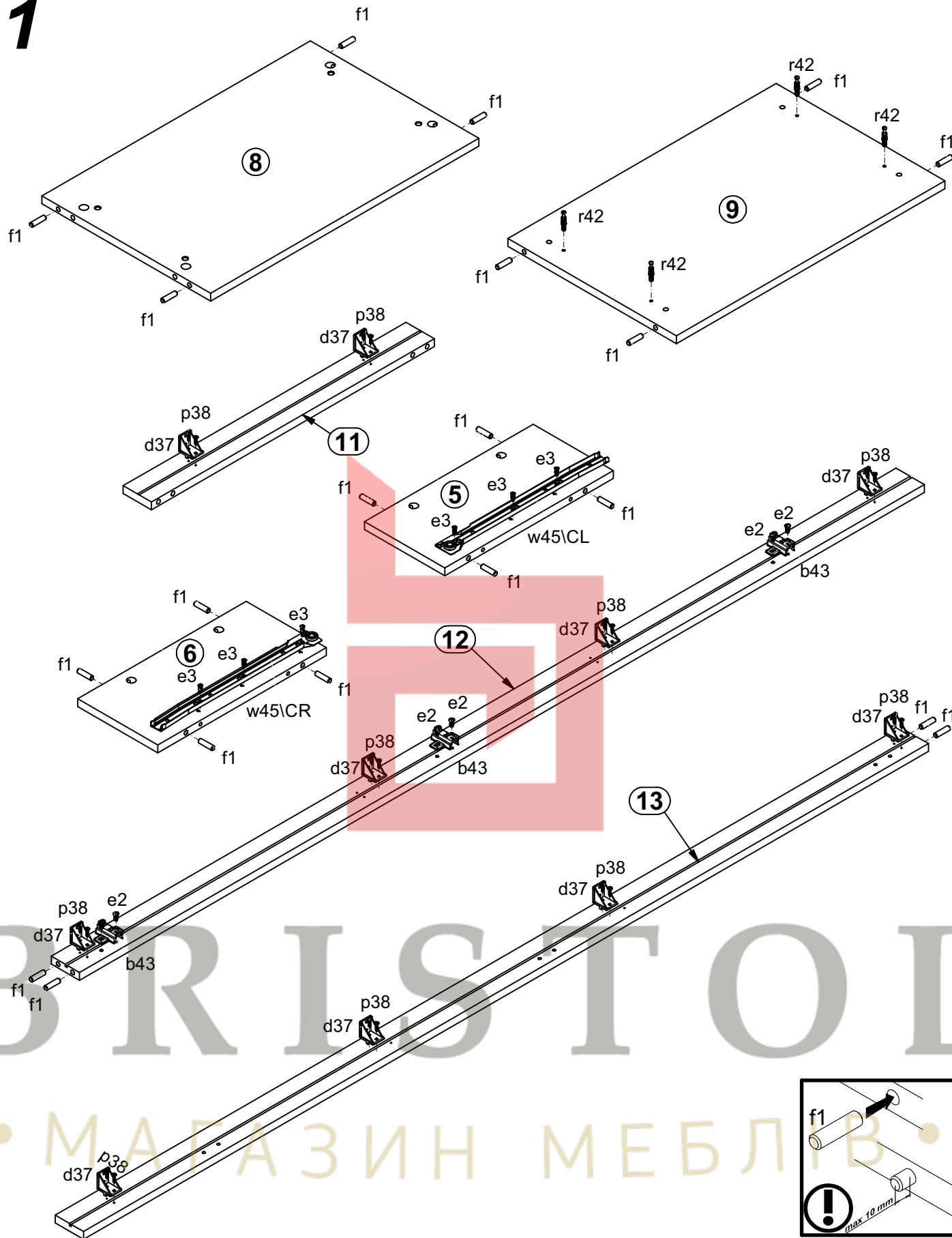


A	B	C	D
1	S382-00010	1634	490 3/4
2	S382-00011	490	196 4/4
3	S382-11019	1900	370 1/4
4	S382-11020	1900	370 1/4
5	S382-11021-01	175,5	370 1/4
6	S382-11022-01	175,5	370 1/4
7	S382-22006	620	370 2/4
8	S382-33011	587	370 2/4
9	S382-33012	587	370 2/4
10	S382-33014	586	368 2/4
11	S382-55015	621	62 1/4
12	S382-55016	1855	62 1/4
13	S382-55017	1855	62 1/4
14	S382-99006	450	348 2/4
15	S382-99503	1896	307 1/4
16	ZP-5519	440	140 1/4
17	BP-511	350	140 1/4
18	BP-512	350	140 1/4
19	Lh-1863	1863	14 1/4



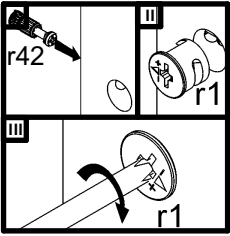
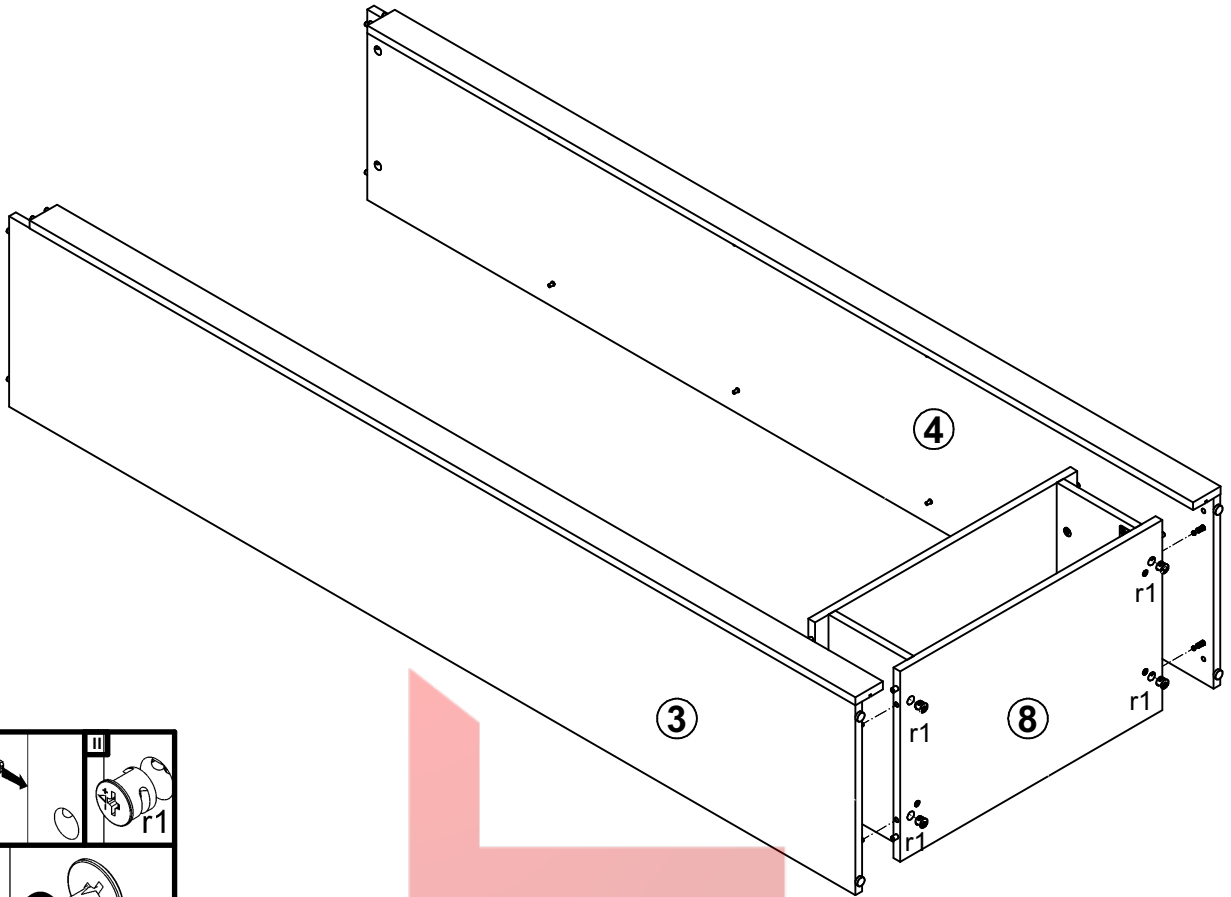
3x  a132	3x  b43	2x  128 mm c328	12x  Ø5x17 mm d1	10x  d37	4x  Ø7x50 mm e1	4x  Ø5x9 mm e19	6x  Ø6,3x13 mm e2	6x  Ø6x13 mm e3
24x  Ø8x30 mm f1	2x  Ø6x30 mm f9	4x  Ø6,5x40 mm f25	4x  k1	55x  l1	40x  Ø3,5x16 mm p38	6x  Ø3,5x15 mm p51	4x  Ø4x25 mm p87	16x  Ø15x12 mm #16 r1
16x  20/11 r42	1x  350 mm w45\CL	1x  350 mm w45\CR	1x  350 mm w45\DL	1x  350 mm w45\DR	4x  Ø16 s2	1x  4 mm z1		
							1x  n26\1	1x  Ø3,5x16 mm p38

1

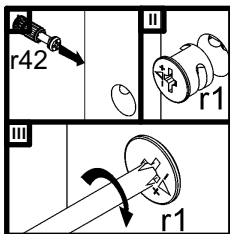
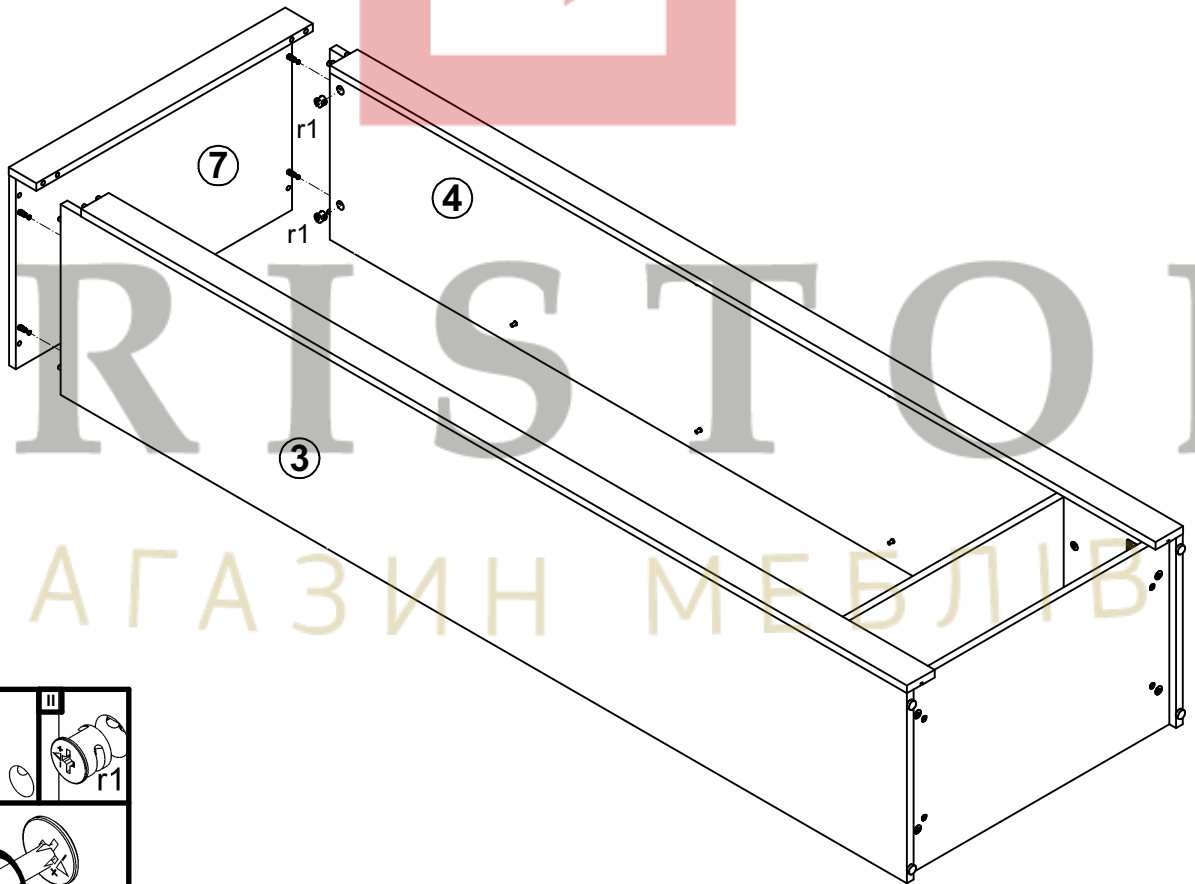




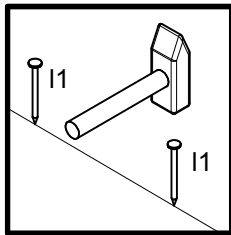
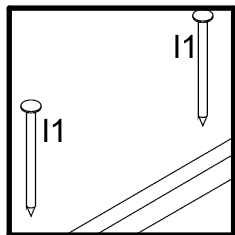
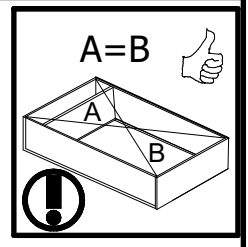
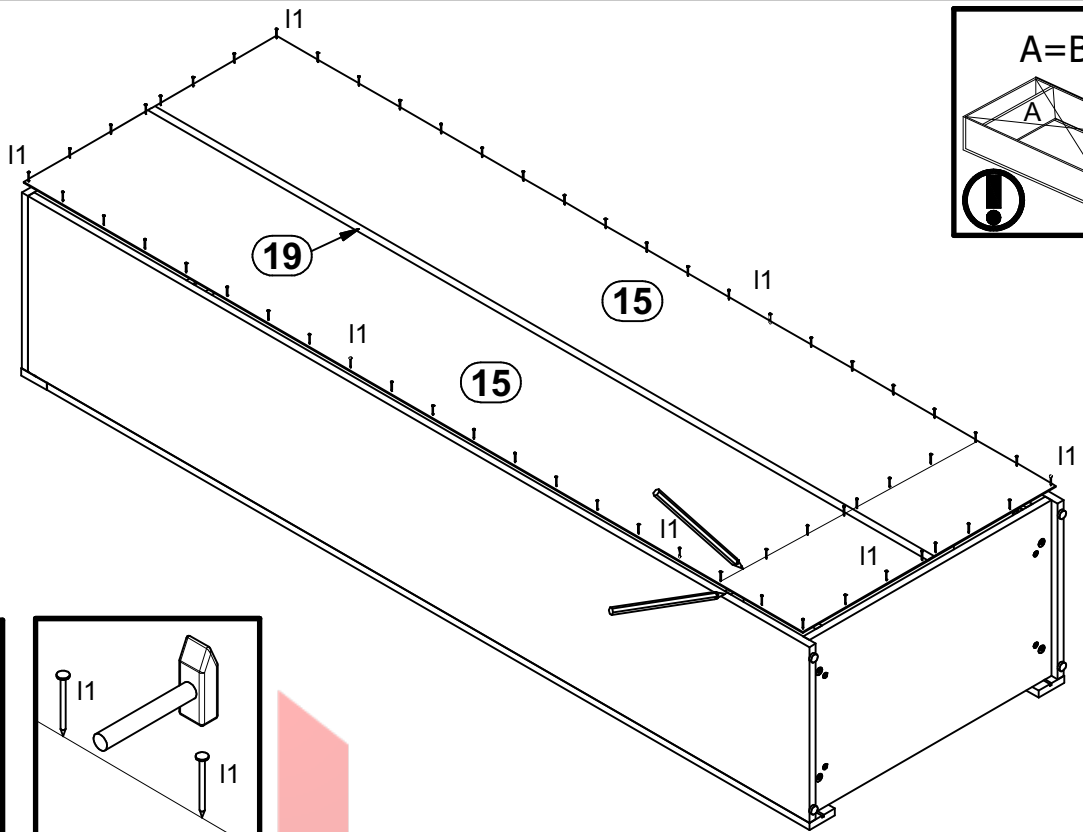
4



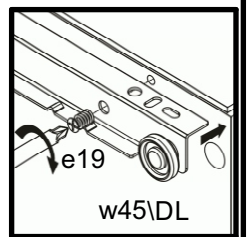
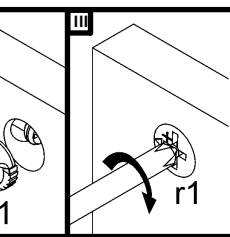
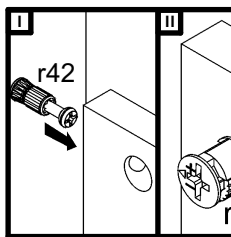
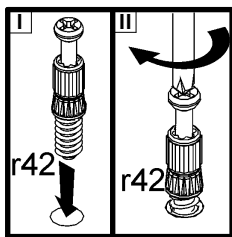
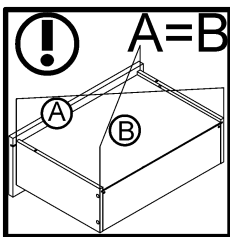
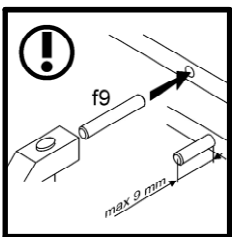
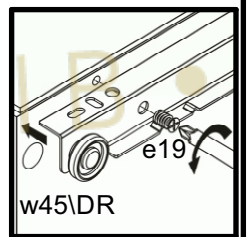
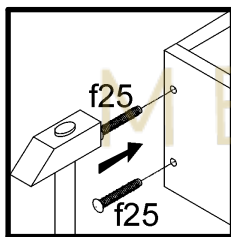
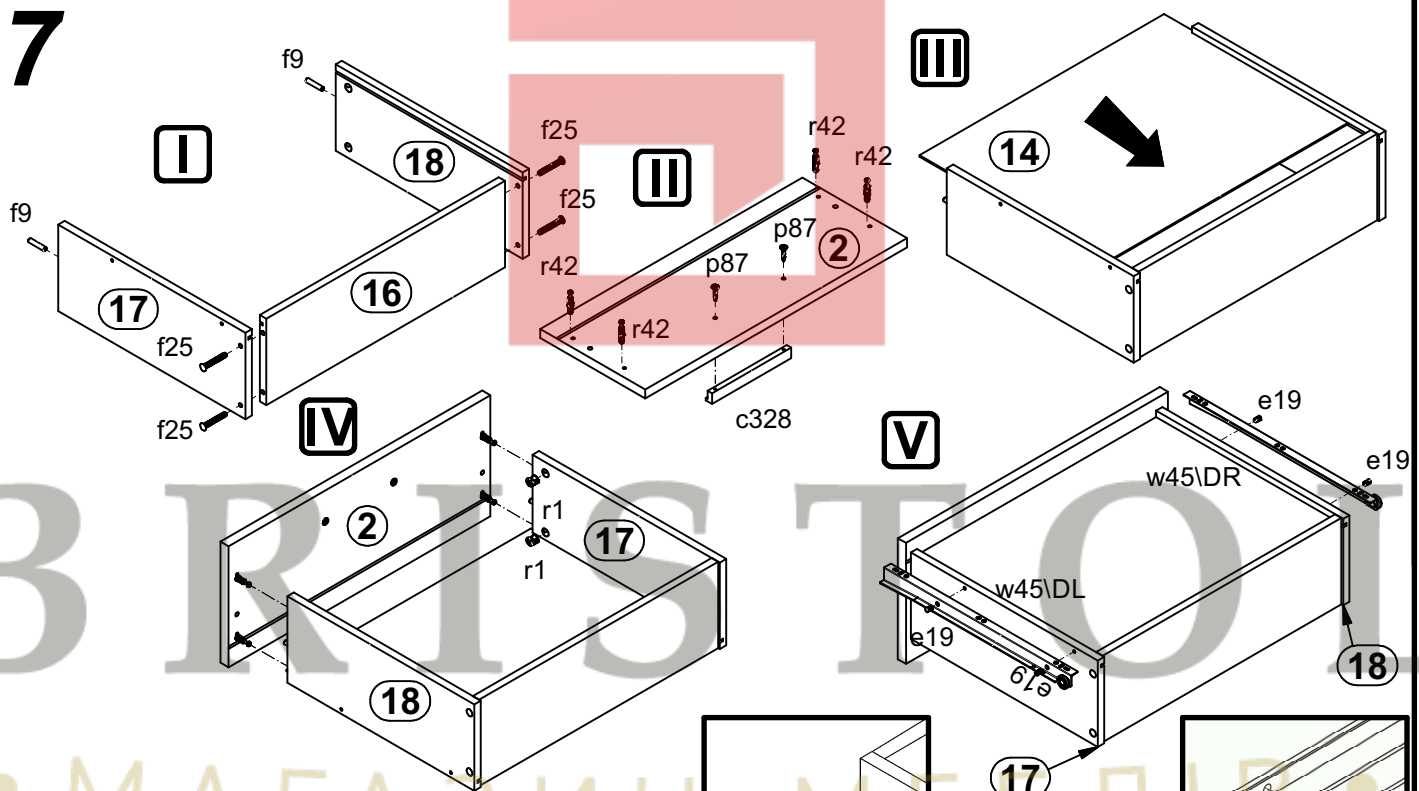
5



# 6



# 7



8

